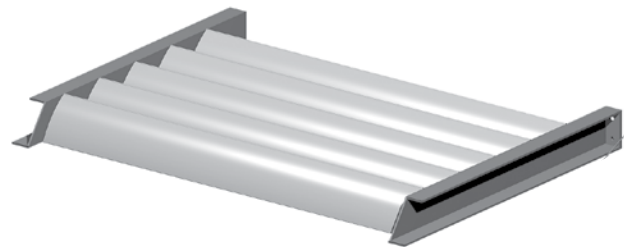
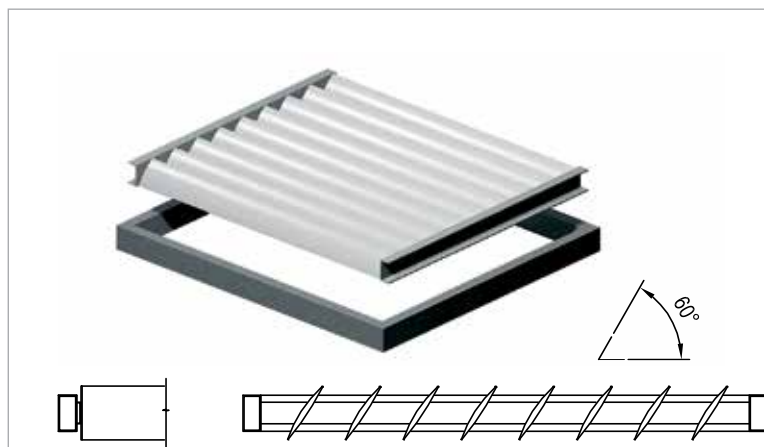
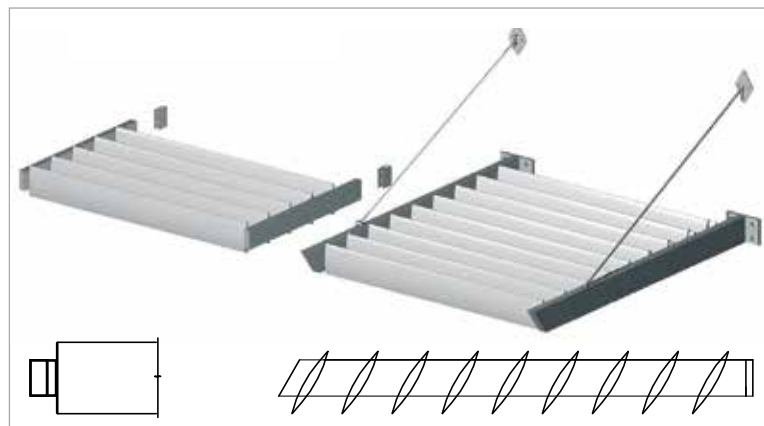
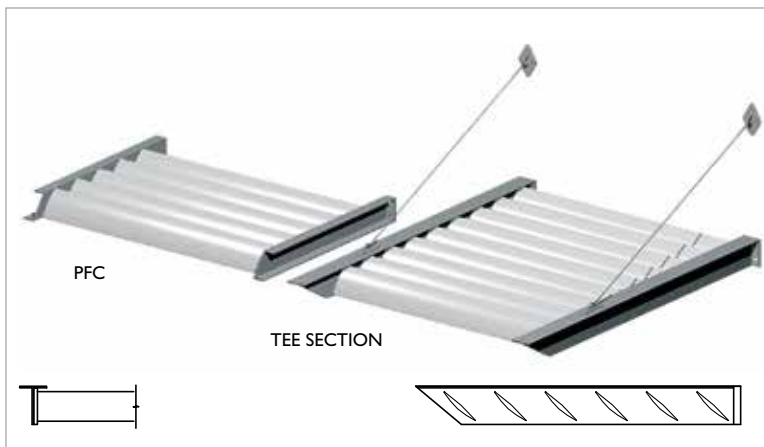


APPLICATION OVERHEAD PANELS WITH END FIXED INFILLS

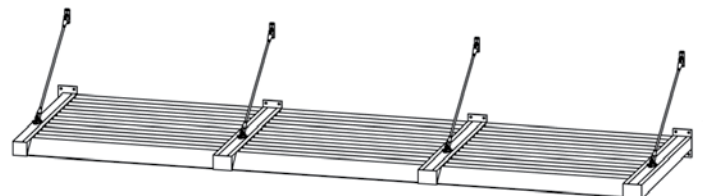
OVERHEAD PANELS
END FIXED INFILLS

How the system works

- Horizontal or Overhead louvres may fit within an existing opening or as illustrated may require a separate structural sub-frame.
- Sub-frames are typically aluminium or steel and usually require specific engineering details.
- Engineering is usually also required for the fixing details to the building.



- Louvrectec specialises in the supply and installation of aluminium structural sub-frames.



- All louvre panels shown can be joined to create one continuous panel.